

WRIA 9 – Governance Structure for Salmon Recovery in the Green/Duwamish and Central Puget Sound Watershed



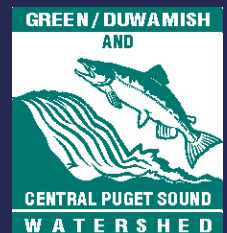
Elissa Ostergaard
WRIA 9 Planning Coordinator

Presentation to the Green/Duwamish Watershed Strategy,
Stormwater Work Group

September 15, 2016

Presentation Summary

- Origin of Water Resource Inventory Area 9
Lead Entity - Endangered Species Act
- Salmon Habitat Plan - 2005
- Interlocally established Watershed Governance & Decision Making
- Key Management Strategies
- Integration with other resource management efforts



King County Watersheds (Water Resource Inventory Areas)



Water Resource Inventory Area 9 includes the Green/Duwamish River watershed and small streams flowing into Puget Sound

Legend:

- Watershed Boundary
- Subwatershed Boundary
- Urban Growth Boundary
- River
- Lake

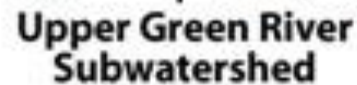
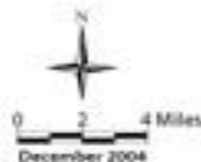
Scale: 0 to 4 Miles

North Arrow

Map Title: GREEN / DUWAMISH AND CENTRAL PUGET SOUND WATERSHED

Map Date: December 2004

Map Source: Map developed by Puget Sound Water Quality Control Board, 1999 and 2004. Map data from Puget Sound Water Quality Control Board, 1999 and 2004.



Key Words: Alcoholism; family; social support; communication; self-esteem

Salmon Recovery Plans: Watersheds of Puget Sound

WRIA 8 / 9 Recovery Plans



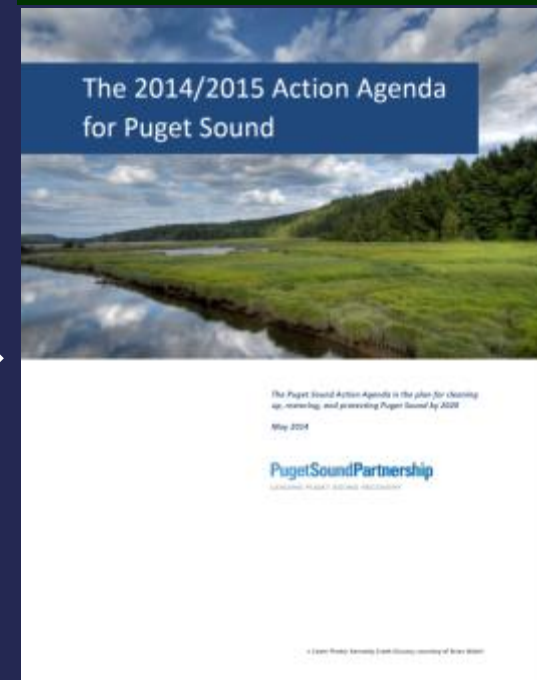
Approved
2005

Puget Sound Salmon Recovery Plan

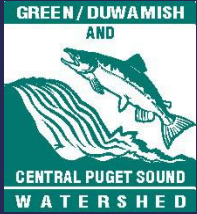


Approved
2007

Action Agenda for Puget Sound Recovery

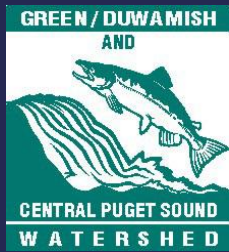


Approved
2008
(updated 2014)



WRIA 9 Governance Structure

- Watershed Ecosystem Forum
 - Policy direction, plan implementation and updates
- Management Committee
 - Budget, administration
- Implementation Technical Committees
 - Project review, monitoring, plan updates
- Working Groups/subcommittees as needed
 - Subarea plans, strategies



WRIA 9 Watershed Ecosystem Forum

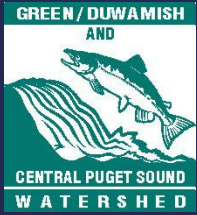
- Authorized by Interlocal Agreement among 17 local governments
- Voting members representing:
 - 16 cities
 - King County
 - Water districts
 - Port of Seattle
 - Environmental interests
 - Agriculture
 - Business interests
 - State and federal agencies



Role of the WRIA 9 Watershed Ecosystem Forum

- Directing implementation and funding
- Providing policy direction
- Educating and engaging
- Building capacity





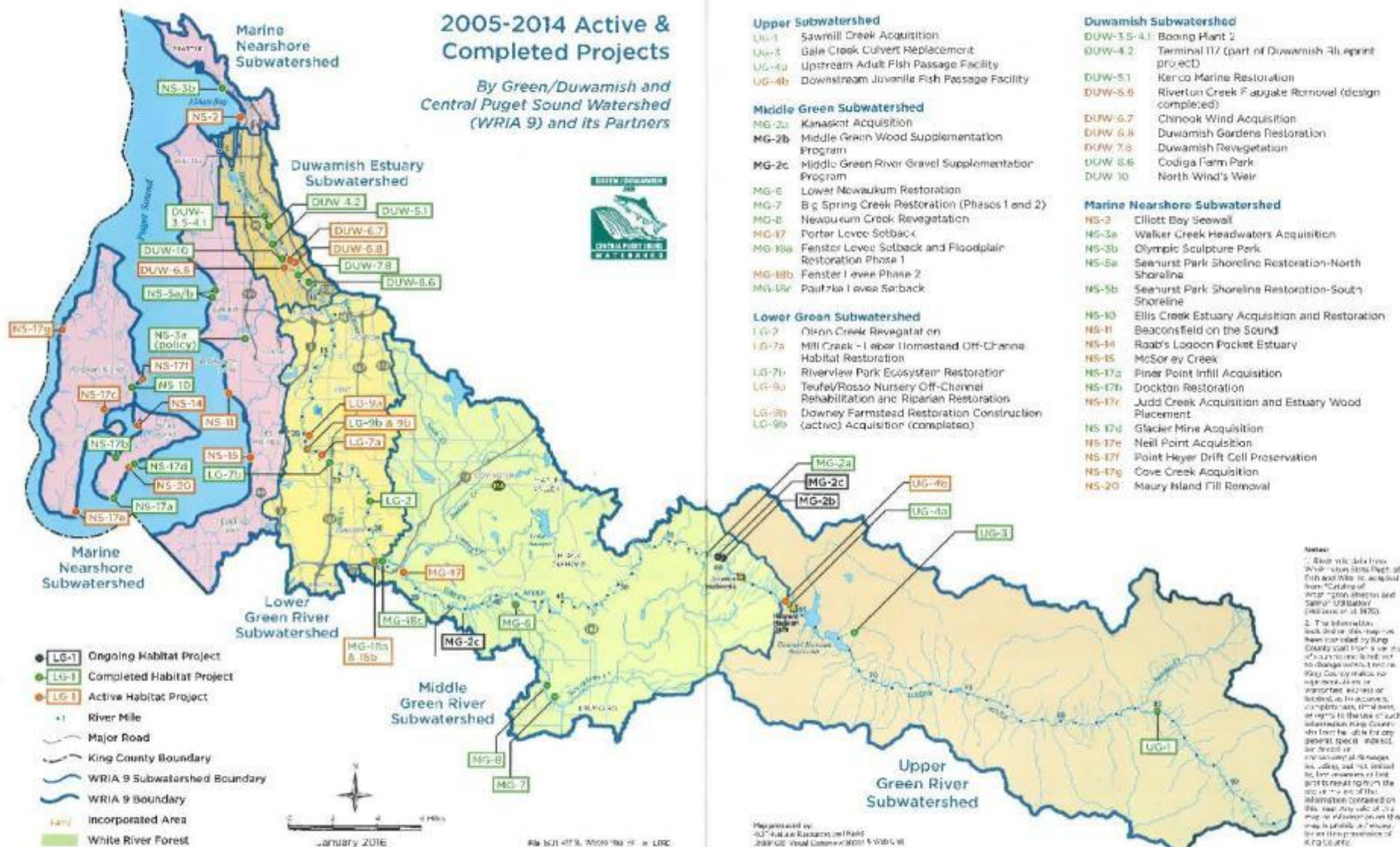
Salmon Habitat PLAN: 2006-2015

Science into Policy and Actions

- Protect, Connect, & Unlock the Natural Potential
- Increase abundance of natural-origin spawners from current 1,737 to 4,200 per year
- Implement the 10-year priority project and program list:
 - 75 habitat *restoration* projects
 - 57 habitat *protection* projects
 - 26 programs (e.g., stewardship, public education and outreach)

2005-2014 Active & Completed Projects

By Green/Duwamish and Central Puget Sound Watershed (WRIA 9) and its Partners



Upper Subwatershed

- UG-1 Sawmill Creek Acquisition
- UG-2 Gale Creek Culvert Replacement
- UG-3 Upstream Adult Fish Passage Facility
- UG-4b Downstream Juvenile Fish Passage Facility

Middle Green Subwatershed

- MG-2a Kanaskat Acquisition
- MG-2b Middle Green Wood Supplementation Program
- MG-2c Middle Green River Gravel Supplementation Program
- MG-3 Lower Nowakum Restoration
- MG-4 Big Spring Creek Restoration (Phases 1 and 2)
- MG-5 Nowakum Creek Revegetation
- MG-6 Porter Levee Setback
- MG-7 Fenster Levee Setback and Floodplain Restoration Phase 1
- MG-8b Fenster Levee Phase 2
- MG-8c Pajitka Levee Setback

Lower Green Subwatershed

- LG-1 Olkon Creek Revegetation
- LG-2 Mill Creek - Upper Homestead Off-Channel Habitat Restoration
- LG-3 Riverview Park Ecosystem Restoration
- LG-4 Teufel/Rosso Nursery Off-Channel Rehabilitation and Riparian Restoration
- LG-5 Downey Farmstead Restoration Construction (active) Acquisition (completed)

Duwamish Subwatershed

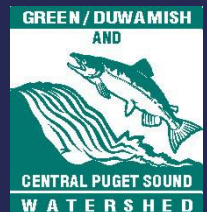
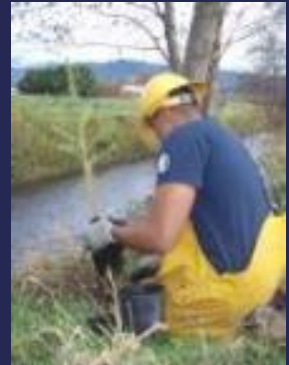
- DUW-1.5-4.1 Boonin Hunt 2
- DUW-4.2 Terminal 117 (part of Duwamish 311 grant project)
- DUW-5.1 Kercio Marine Restoration
- DUW-5.6 Riverton Creek Fatigue Removal (design completed)
- DUW-6.7 Chinook Wind Acquisition
- DUW-6.8 Duwamish Gardens Restoration
- DUW-7.8 Duwamish Vegetation
- DUW-8.6 Codiga Farm Park
- DUW-10 North Wind's Weir

Marine Nearshore Subwatershed

- NS-2 Elliott Bay Seawall
- NS-3a Walker Creek Headwaters Acquisition
- NS-3b Olympic Sculpture Park
- NS-5a Seawall Park Shoreline Restoration-North Shoreline
- NS-5b Seawall Park Shoreline Restoration-South Shoreline
- NS-10 Ellis Creek Estuary Acquisition and Restoration
- NS-11 Beaconsfield on the Sound
- NS-14 Raab's Lagoon Pocket Estuary
- NS-15 McSorley Creek
- NS-17a Pinar Point Infill Acquisition
- NS-17b Drockton Restoration
- NS-17c Judd Creek Acquisition and Estuary Wood Placement
- NS-17d Glacier Mine Acquisition
- NS-17e Neil Point Acquisition
- NS-17f Point Heyer Drift Cell Preservation
- NS-17g Cove Creek Acquisition
- NS-20 Maury Island Fill Removal

What have we accomplished in WRIA 9?

- 918 acres protected through acquisition or easement
- 80 acres of riparian area planted
- 1.2 miles of levees removed or set back
- 57 acres of floodplain reconnected
- 3,370 feet of marine shoreline restored



Integrating Other Efforts

- Fish passage at Howard Hanson Dam and Tacoma Diversion Dam
- Lower Green River System-Wide Improvement Framework
- Providing education and stewardship services in partnership with Environmental Science Center, King Conservation District, Flood Control District, and community organizations.
- Riparian area stewardship and noxious weed treatment
- Puget Sound recovery



Stormwater in the WRIA 9 Habitat Plan

- 2005 science did not show water quality as a threat to Chinook salmon
 - 2005 plan encourages Low Impact Development
 - No stormwater projects included
- Recent science indicates contaminants and temperatures a problem for Chinook survival
- Addressing water quality in Habitat Plan update, now through 2018
- Staff capacity, funding are limitations