



# Puyallup Watershed Initiative

Fabiola Greenawalt, Program Officer  
September 15, 2016

# Vision

- Increase community resilience throughout the Puyallup River watershed because it is confronted by significant growth and urbanization.
- Create a grassroots effort grounded in the belief that the people who live and work in a place understand it better than anyone else does.

# PWI Guiding Principles

---

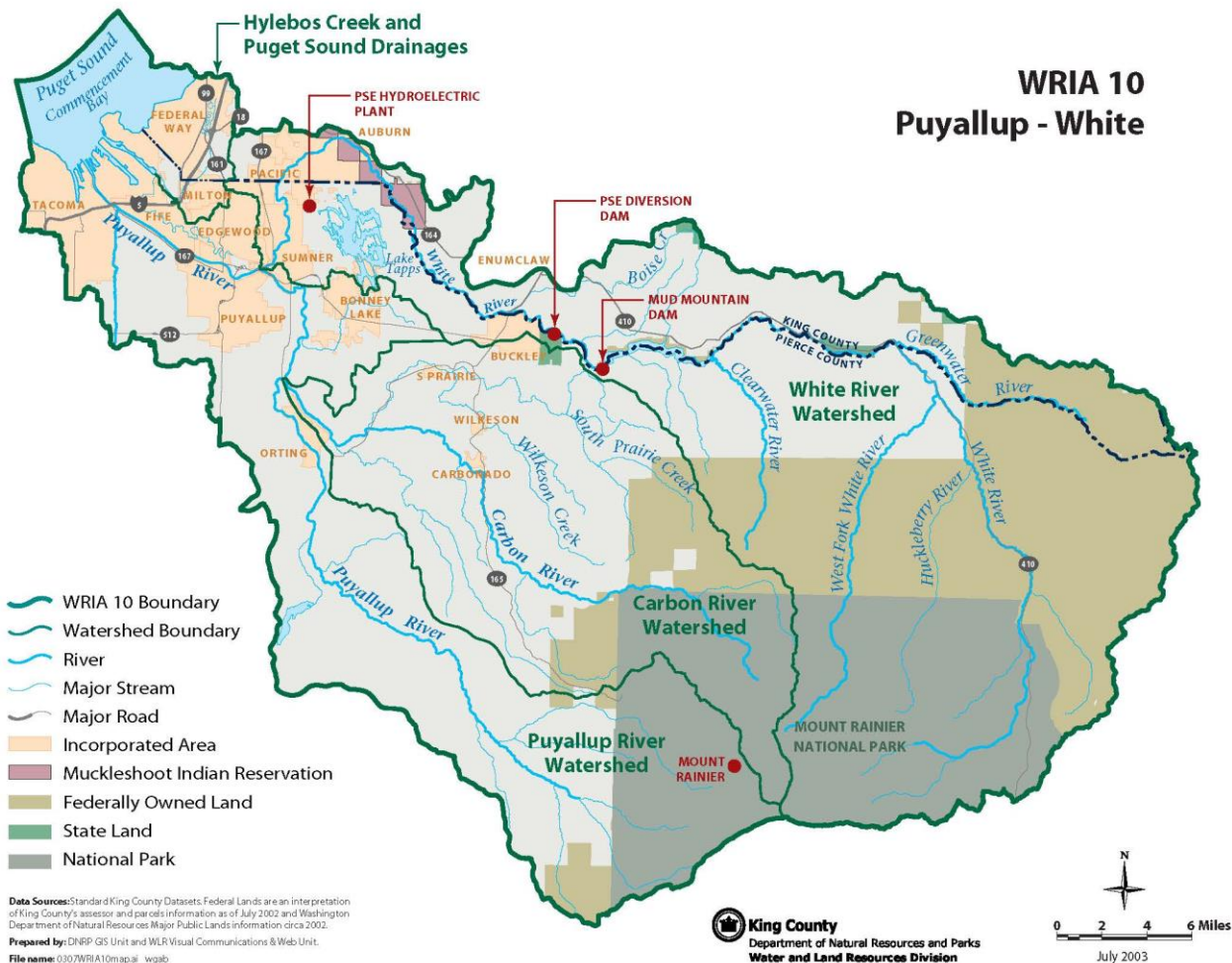
**PWI brings together people not typically at the same table to address persistent challenges and promising opportunities**

---

## PWI Guiding Principles

- 1** Increase community stewardship
- 2** Strengthen local leadership
- 3** Improve water quality
- 4** Ensure equity and inclusion

# Puyallup Watershed Initiative at a Glance

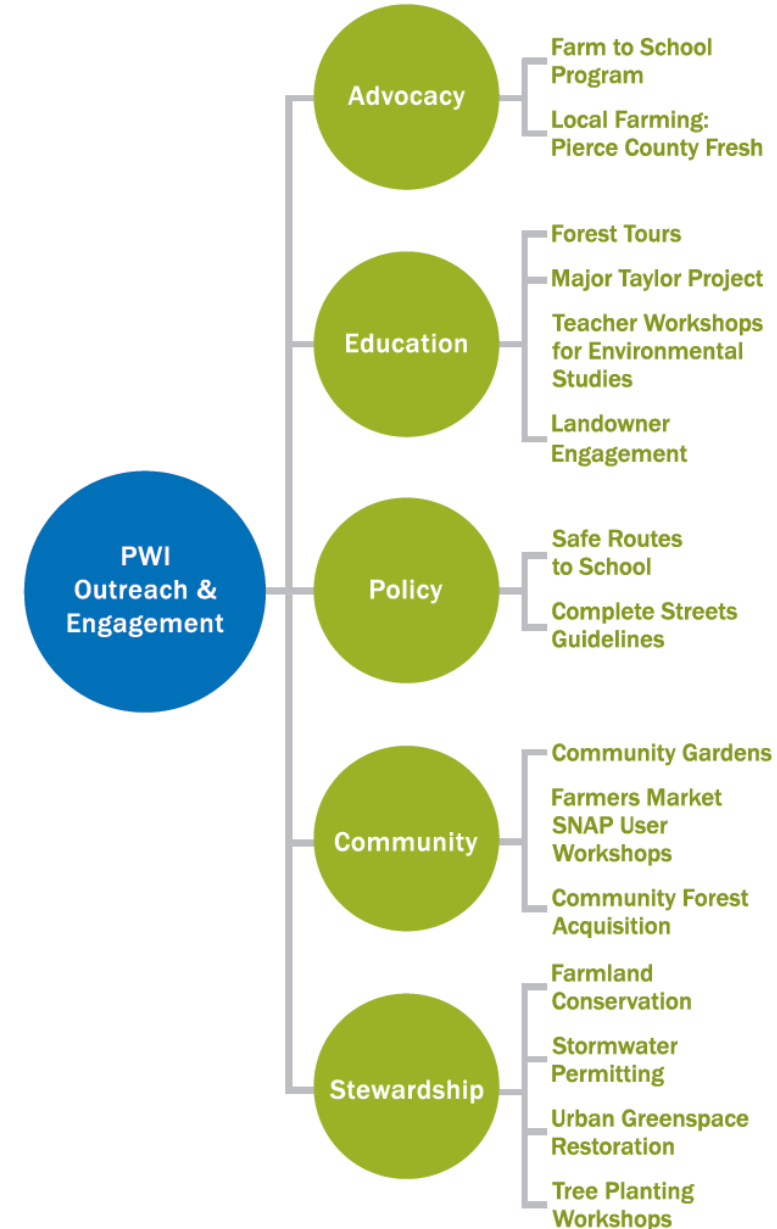
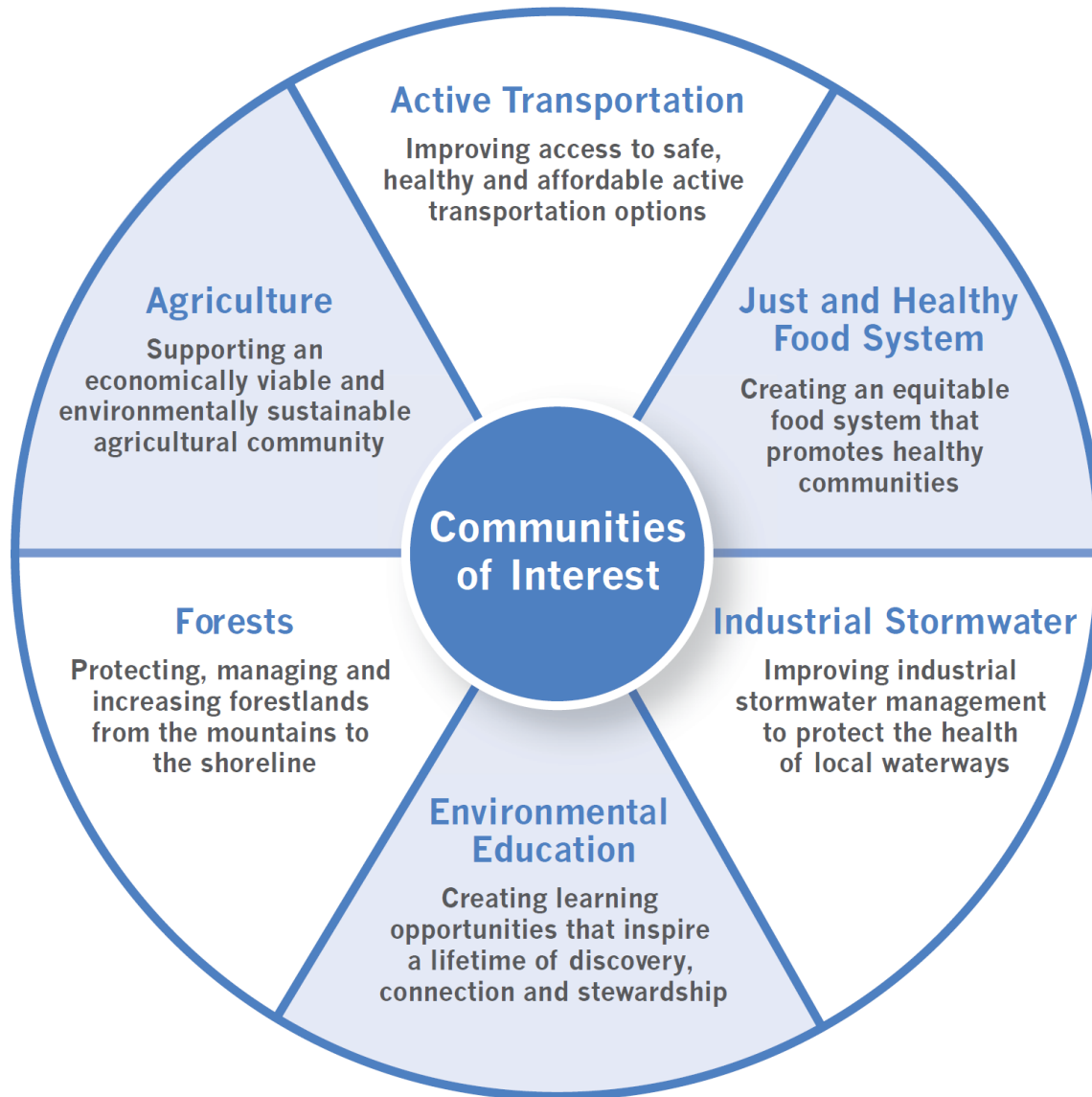


## Initiative at a Glance

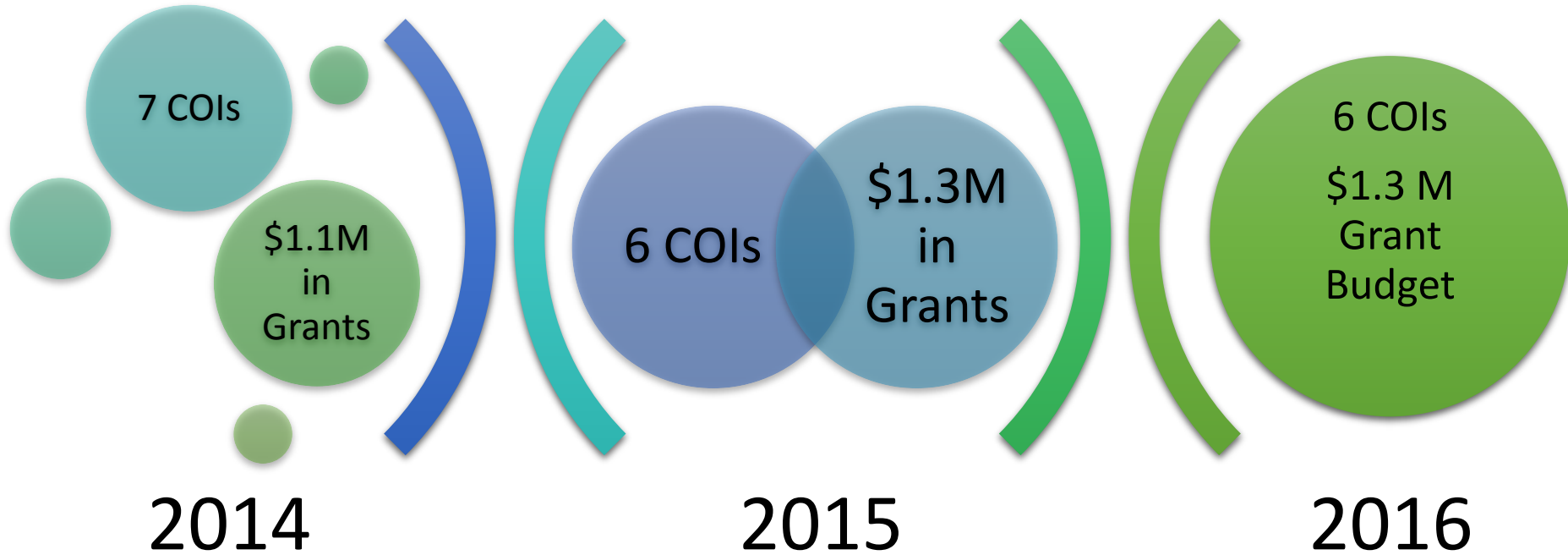
2012 - Launch 10 year Initiative

Non-profits & For-profits	150+
Agencies (city, state, federal)	17
*Funders	10
Tribal Nations	2
Active individual leaders	300 +
Current TRFF funding	\$10M
Square miles	1,041
Population	316,000 +
Communities of Interest	6

# Communities of Interest



# Grants From TRFF



# Other Grants

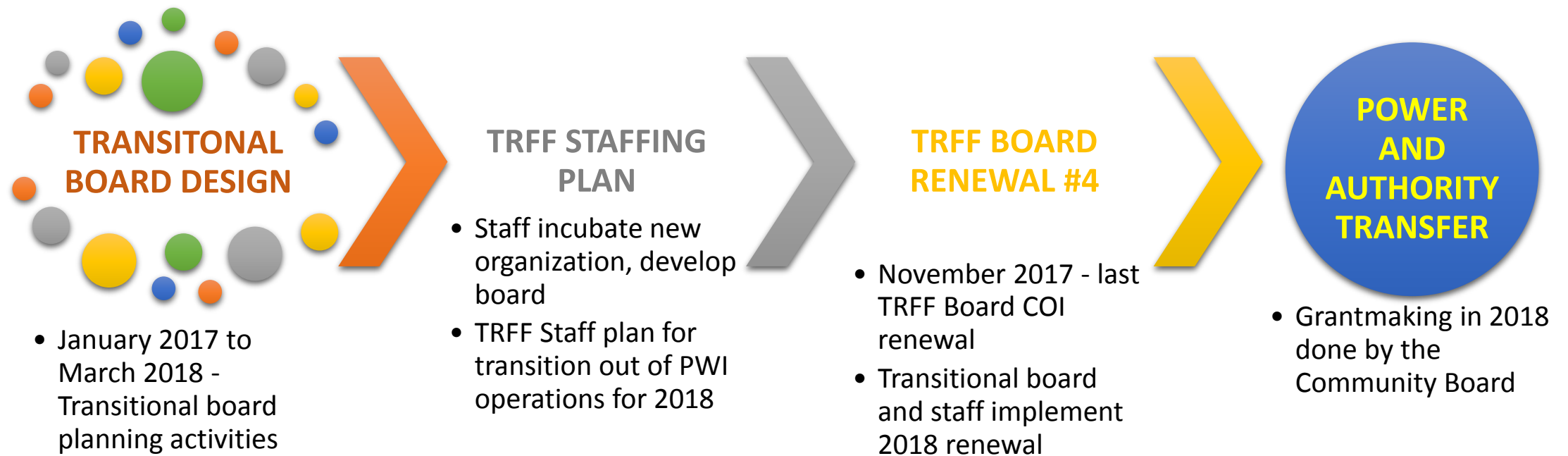
COI	Total
PWI	\$600,000
Active Transportation COI	\$325,558
Agriculture COI	\$201,294
Environmental Edu. COI	\$10,000
Forests COI	\$10,000
Industrial Stormwater COI	\$0.00
Just & Healthy Food COI	\$0.00
Grand Total	\$1,146,852

# Operational Structure

- 2013 – 2015:
  - Bonneville Environmental Foundation Intermediary
  - \$1M
- 2015 – Current
  - 2 FTEs on loan from TRFF
  - 1 new TRFF staff hired
  - Plenty of consultants
  - \$700K approximately a year



# Transition to Independence and Sustainability



## 3 Places where the PWI gets it *wrong*

1. Not having an equity strategy from the beginning
2. Understanding the cost in time and money
3. Going too fast

## 3 Places where the PWI gets it *right*

1. Letting partners choose what to focus on vs. a top down approach
2. Building stronger networks
3. Independence



# **Puyallup Watershed Initiative**

Pacific Lutheran University, Center for Media Studies

[PWI Video Project](#)