

Nonprofit Sector

Current Activities
and What We Bring to the Table

*Heather Trim
Our Green/Duwamish
Watershed-Wide Stormwater Strategy Workshop
May 4, 2016*

future
wise



EDUCATION/SOCIAL MARKETING

ECO Nets

Mission:

As the King County EcoNet, we connect and collaborate to provide education, outreach, and involvement opportunities to our community promoting the health of the Puget Sound watershed.



KING COUNTY ECONET - WE ARE BIG !

21 Acres Center for Local Food & Sustainable Living
Alliance for Puget Sound Shorelines
Asa Mercer Middle School
BALLE Seattle
Bellevue Stream Team
Burke Museum of Natural History and Culture
Calyx Sustainable Tourism
Camp Long Environmental Learning Center
Cascade Interpretive Consulting
Cascade Land Conservancy
Cascadia Consulting Group
Cascadia Environmental Science Ctr
City of Bellevue
City of Bothell-Public Works
City of Kirkland Public Works Department
City of Lake Forest Park
City of Pacific
City of Seattle
City of Shoreline
City of Tukwila
Community Coalition for Environmental Justice
COSEE-Ocean Learning Communities
DOH
Duwamish River Cleanup Coalition
EarthCorps
Ecology
ECOSS
EEAW
King Co and Sound Experience
Enviromental Science Center

Environmental Outreach and Stewardship Alliance
Environmental Science Center
EPA-Region 10
Facing the Future
Falls City Float Task Force
Farallon Consulting, L.L.C.
Fauntleroy Watershed Council
Feet First
Friends of North Creek Forest
Friends of the Burke Gilman Trail at Sand Point
Friends of the Cedar River Watershed
Friends of the Earth
Friends of the Issaquah Salmon Hatchery
Friends of the L White River
Friends of Uplake Vista Park
Girl Scouts of Western WA
Green Seattle Partnership
Green Seed Consulting
Homewaters Project
Islandwood
Just Health Action
Keepers of Point Robinson
Kent School District
King Conservation District
King County
King County Noxious Weed Control Program
King County WRIA 9
Marine Science and Technology Center, Highline Community College
Mid Sound Fisheries
Mountains to Sound Greenway Trust
National Wildlife Federation

Native Growth
Nature Vision
Newcastle Weed Warriors
NOAA
O hEaghra Enterprise
Ocean Ing Project and NANOOS,
University of Washington
Olympic Outdoor Center
Olympic Sculpture Park/SAM
Pacific Education Institute
Pacific Science Center
Partnership for Water Conservation
PCC Farmland Trust
People for Puget Sound
Puget Sound Energy
Puget Soundkeeper Alliance
Puyallup River Watershed Co
REEF and WA Scuba Alliance
Resource Stewards Consulting
Resource Media
Sage Environmental/ WRIA 8
Salish Sea Expeditions
Seattle Aquarium
Seattle Green Schools
Seattle GreenDrinks
Seattle Parks and Recreation
Seattle Public Utilities
Seattle Tilth
Seattle Urban Wildlife Group
Service Education Adventure
Shared Strategy Puget Sound
Shoreline
Sierra Club
Sightline
Snohomish County
Sno-King Watershed Council
Snoqualamie Watershed Forum

Solid Ground
Solutions for Humanity,
Community & Environment
Sound Experience
Stewardship Partners
Still Hope Productions
Stilly-Snohomish Fisheries Enhancement Task Force
Surfrider
Sustainability Foundation
Sustainable Hotel & Tourism Consultants
Sustainable Seattle
Terry Home
The Center for Wooden Boats
The Piper's Creek Watershed Proj
The Russell Family Foundation
The Whale Trail
Triangle Associates, Inc
Trout Unlimited
University of Washington
Urban Wilderness Project
UWEO Engineering and Technology Programs
Vashon Beach Naturalists
WA MESA
WA Parks
WA Sea Grant
Washington Biodiversity
Washington Toxics Coalition
Waskowitz Outdoor School
Watertenders
Whale Tale, UW
Woodland Park Zoo
WRIA 8
WSU Beach Watchers and Shore Stewards / Snohomish County
WSU King County Extension Watershed Stewardship Program

rain gardens competitions curriculum watershed report forums

coasters vetted facts festivals behavior change natural yard care

Education and Outreach



<http://shadowhabitat.org/>



www.stewardshippartners.org/programs/salmon-safe-puget-sound



www.seattletilth.org/learn/water-smart-toolkit-pilot-edition/view?searchterm=stormwater

Students



www.sustainabilityambassadors.org/



www.seattlemymca.org/Locations/YESC/Pages/Home.aspx

Make a Splash as a Blue Team!

Teachers, Scout Leaders, Home-School Parents!

YOU can create a youth-powered **Blue Team** to help care for one of our most precious natural resources – **WATER!**

Blue Teams carry out a water quality action project that promotes **sustainability** and **stewardship** in their community. This program is possible with generous funding from Bellevue Utilities, Cascade Water Alliance, City of Bothell, Discern Charitable Foundation, Northshore Utility District, Woodinville Water District, and Kirkland Public Works.

This program is available to students in **grades K - 9** (K - 12 for Bellevue Utilities and Cascade Water Alliance!)

HOW TO REGISTER: Fill out and fax or e-mail the registration form below. (Questions - contact info@naturevision.org. Within one week of submitting your registration form, you will receive a phone call from a water specialist to talk about your idea, set dates and jump-start your project! Nature Vision is a non-profit Environmental Education organization in King County.

WHAT IS A BLUE TEAM?

A **Blue Team** is a group of students (a classroom, school club, or a neighborhood, home school, scout or camp group) who commit to taking on and completing a water stewardship project in their community. The students can create their own project or use one listed here.

Blue Teams receive **4 hours** or more of expert help from a Nature Vision Water Specialist- help in planning, preparing for, and executing their project. Blue Team participants also receive recognition upon completion of the project.

BLUE TEAM PROJECT IDEAS

- Help restore the area around a stream or wetland.
- Replace landscaping with drought tolerant, native plants, or research and remove invasive plants.
- Create posters, brochures or a video to teach others about water conservation and non-point source pollution and what we can do to help.
- Start a campaign at your school and/or community to increase water quality awareness.
- Create a water-wise garden.

HOW TO REGISTER: Fill out and fax or e-mail the registration form below. (Questions - contact info@naturevision.org. Within one week of submitting your registration form, you will receive a phone call from a water specialist to talk about your idea, set dates and jump-start your project! Nature Vision is a non-profit Environmental Education organization in King County.

<http://naturevision.org/blue-teams>



<http://envsciencecenter.org/>

Don't Drip and Drive

**Don't
Drip & Drive**



**Fix That
Leak!**

% of Cars that Leak

About

10%

(About **282,000** vehicles)



3.13 MILLION VEHICLES IN
THE PUGET SOUND REGION



LEAK 7 MILLION QUARTS
OF OIL A YEAR
EQUAL TO A TANKER TRUCK PER DAY!



Other Social Marketing Campaigns



https://seattle.surfrider.org/?page_id=12



www.seattletilth.org/pesticide-reduction-training/?searchterm=stormwater

Terminology Research

Current usage:

- **Runoff**
- **Drainage**
- **Erosion**
- **Flooding**
- **Rain or rainwater**
- **Surface water –**
- **Stormwater pollution or polluted stormwater runoff**



BIG PICTURE

Equity and Environmental Justice



Legislative



<https://wecprotects.org/environmental-priorities-coalition/>

Institutions – Carry Message





Photo: Heather Trim

RESOURCES

Volunteers



\$\$\$

DOING RIGHT BY PUGET SOUND— 'STORMWATER SUPERSTARS' IN BUSINESS

The Boeing Company

- Game-changing investments in clean water including \$2.5 million support for Puget Sound and sustainable stormwater approaches.
- Large-scale restoration projects along lower Duwamish.
- Clean tech innovation research with Washington Stormwater Center and WSU to turn a composite byproduct (from airplane production) into permeable pavement with increased strength.

Salmon Safe Contractors: GLY, Turner, Lease Crutcher Lewis, Exxel Pacific, Sellen

- Contractors enrolled in the Salmon Safe program meet standards by achieving zero sediment runoff at all sites, not just those that trigger permits. They focus on water quality at a level safe for salmon, and also volunteer to be monitored for 3 years.

Stephen Grey & Associates and First Western

- Designing new project that will also collect and filter stormwater runoff from SR 99 bridge for treatment in their landscaped rain gardens. Tableau will be the tenant of this new facility.

Aslan Brewery

- Employee education to be clean water ambassadors & downtown Bellingham rain garden stewards.

Stone34 and Skanska

- Pioneering project in Seattle's Deep Green Pilot Program, designed to capture and use at least 50% of stormwater on site. Provisions for future upgrades to full net zero water reuse through grey- and black-water use to potable standards.

Aveda and Gary Manuel Salon

- Employee education to be clean water ambassadors & Earth Month fundraising program.

Who did we miss? Let us know. We would love to spread the word about their clean water action!

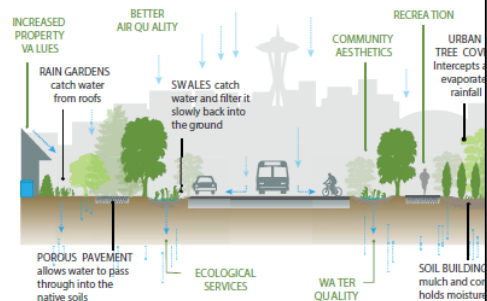
Vulcan

- Launched Vulcan Blue, a company-wide program that aims to reduce our impact on the environment, particularly local watershed and ocean habitats.
- Partnering with Salmon-Safe to create the first developer pilot accreditation with data being reported to the Clinton Global Initiative.
- Partnering with the City to filter stormwater pollution from 400 acres of North Capitol Hill at 'Swale on Yale'.

Others Embracing Green Stormwater Infrastructure
Google (SLU), Henbart, Herrera, MIG/SVR, Mithun, NBBJ, Se
Stratford Place: CMI Housebuilders Inc., The Sedges at Pipe

INVEST IN NATURE-BASED SOLUTIONS TO CLEAN WATER, GREEN INFRASTRUCTURE

Our cities and towns benefit from nature—on the streets, next to schools and hospitals, outside our windows; everywhere people are, we can benefit from nature.



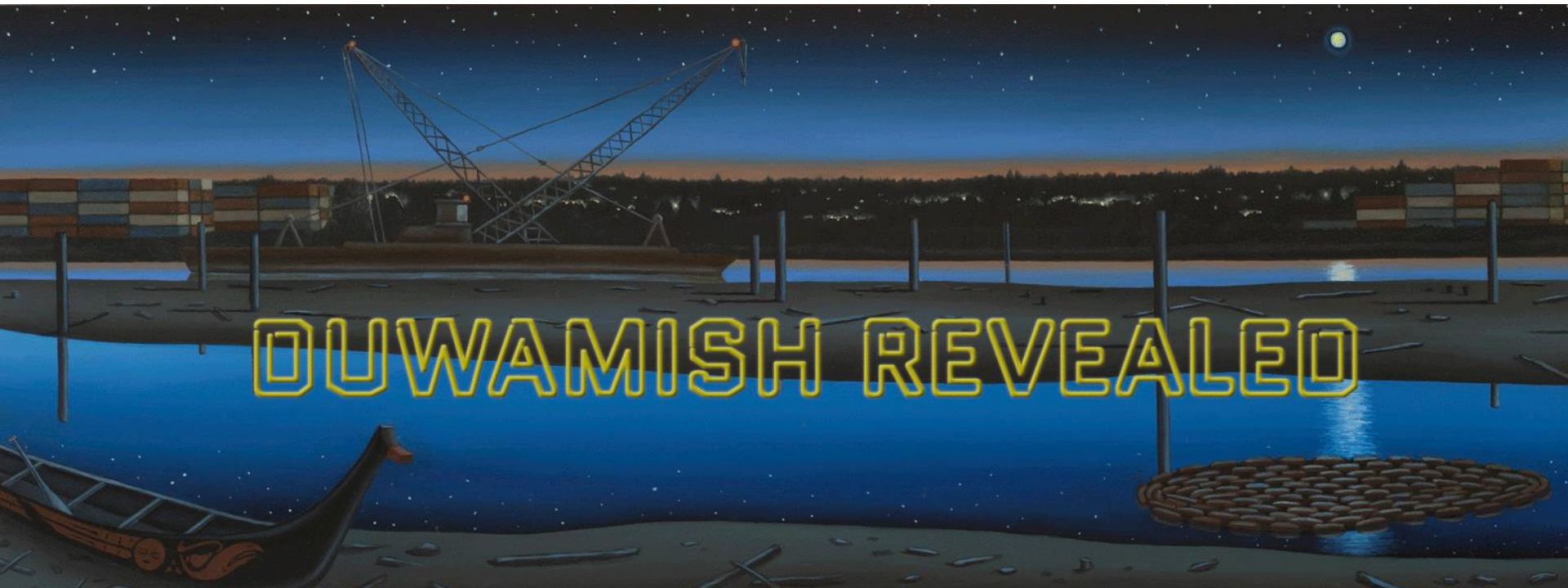
SOLVING STORMWATER: ACCELERATING SOLUTIONS TO PUGET SOUND'S #1 POLLUTION PROBLEM

WHAT IS THE ISSUE?

As stormwater hits the ground and washes over impervious surfaces in urban areas, it picks up pollution and rushes to creeks, lakes, and Puget Sound. In a natural setting, clean stormwater soaks into the ground and helps replenish vital groundwater. Stormwater pollution is considered the biggest water pollution problem in the urban areas of Washington State.

Culture shifting

- Art!



Business Training and Outreach

- Industrial stormwater training workshops
- Technical Assistance (spill kits)
- District approaches



Citizen Monitoring

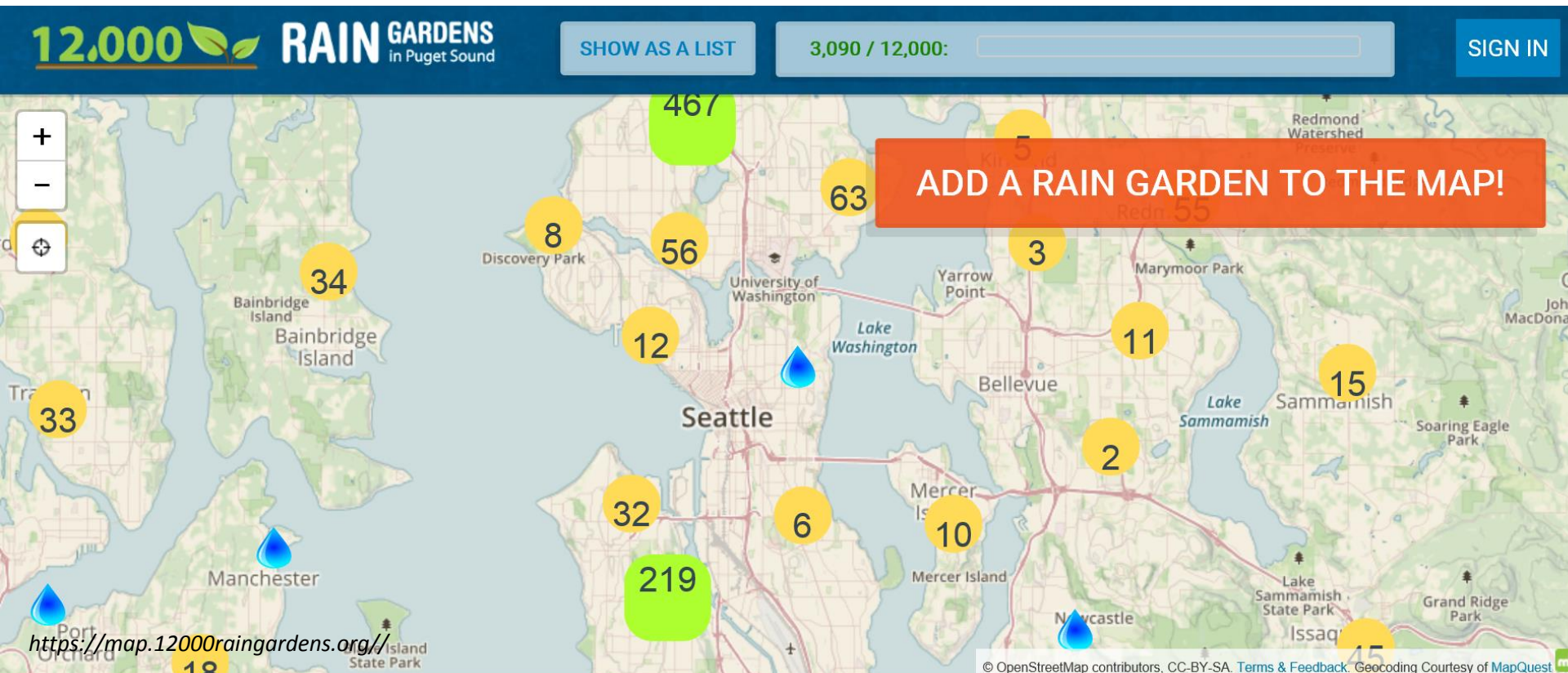




ON-THE-GROUND

Rain gardens

- Regional campaign
- Individual projects



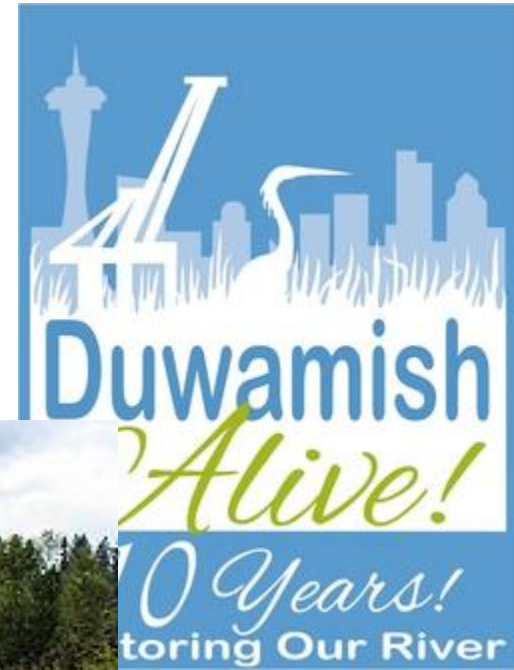
Depave and Dirt Corps



Habitat Restoration



<http://webmgrc.wix.com/mgrc#!current-projects/c21s7/>





OTHER

Photo source:

<http://keetsa.com/blog/eco-friendly/cash-for-clunkers-program-lives-on-2-billion-more-approved-by-congress/>

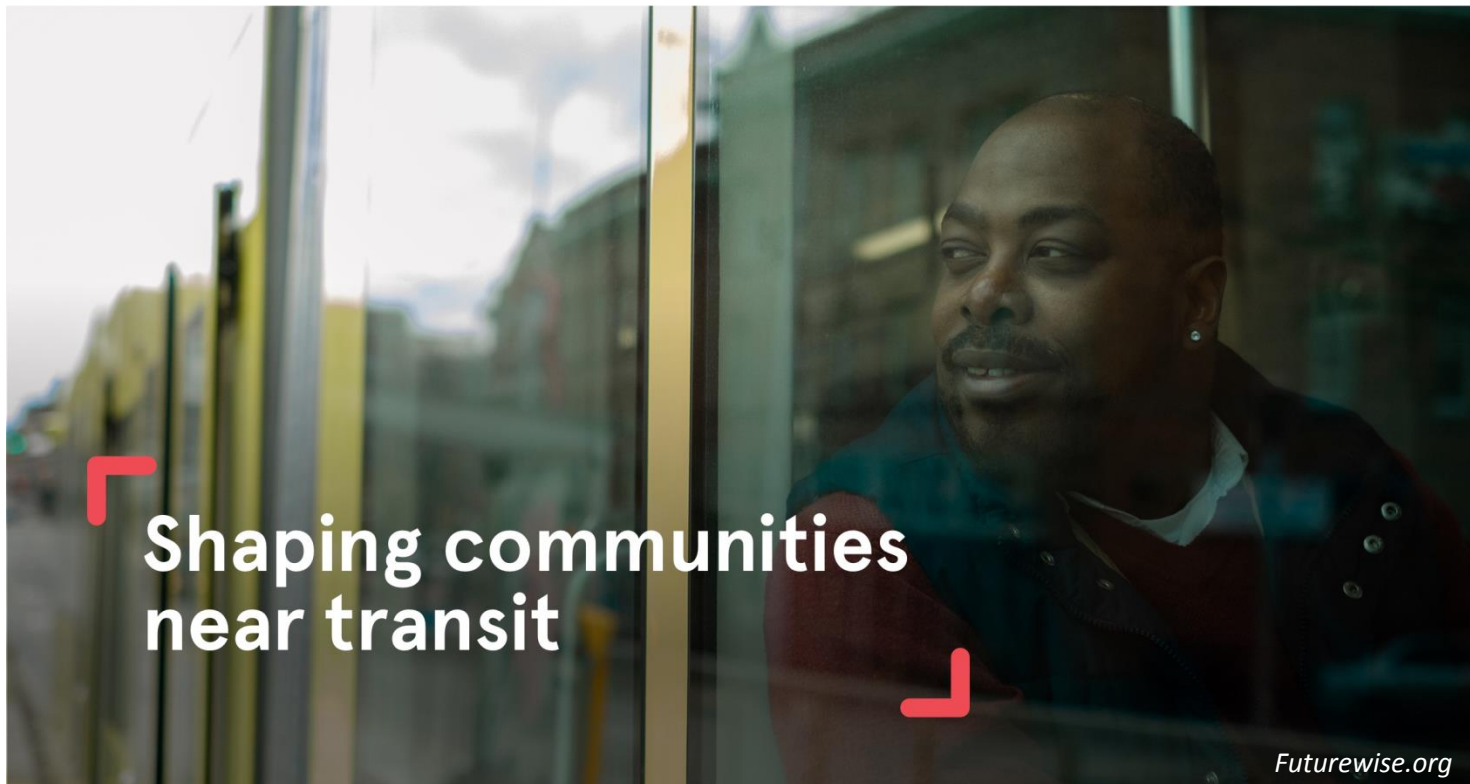
Stormwater Litigation



<https://vimeo.com/pugetsoundkeeper>

Growth Management Act Advocacy

- Density = stormwater management
 - Protecting working lands, rural areas, etc.
- Protecting critical areas



Effectiveness monitoring



Photo by Curtis Hinman. www.wastormwatercenter.org/4422-bioretenction-components





Photo: Heather Trim

In sum

- Huge amount of effort to be leveraged
- Have unique resources
- Particularly helpful for shifting the culture

