

Phase II Municipal SW Permittees

Making a difference!



Green/Duwamish Watershed Advisory Group
May 4, 2016





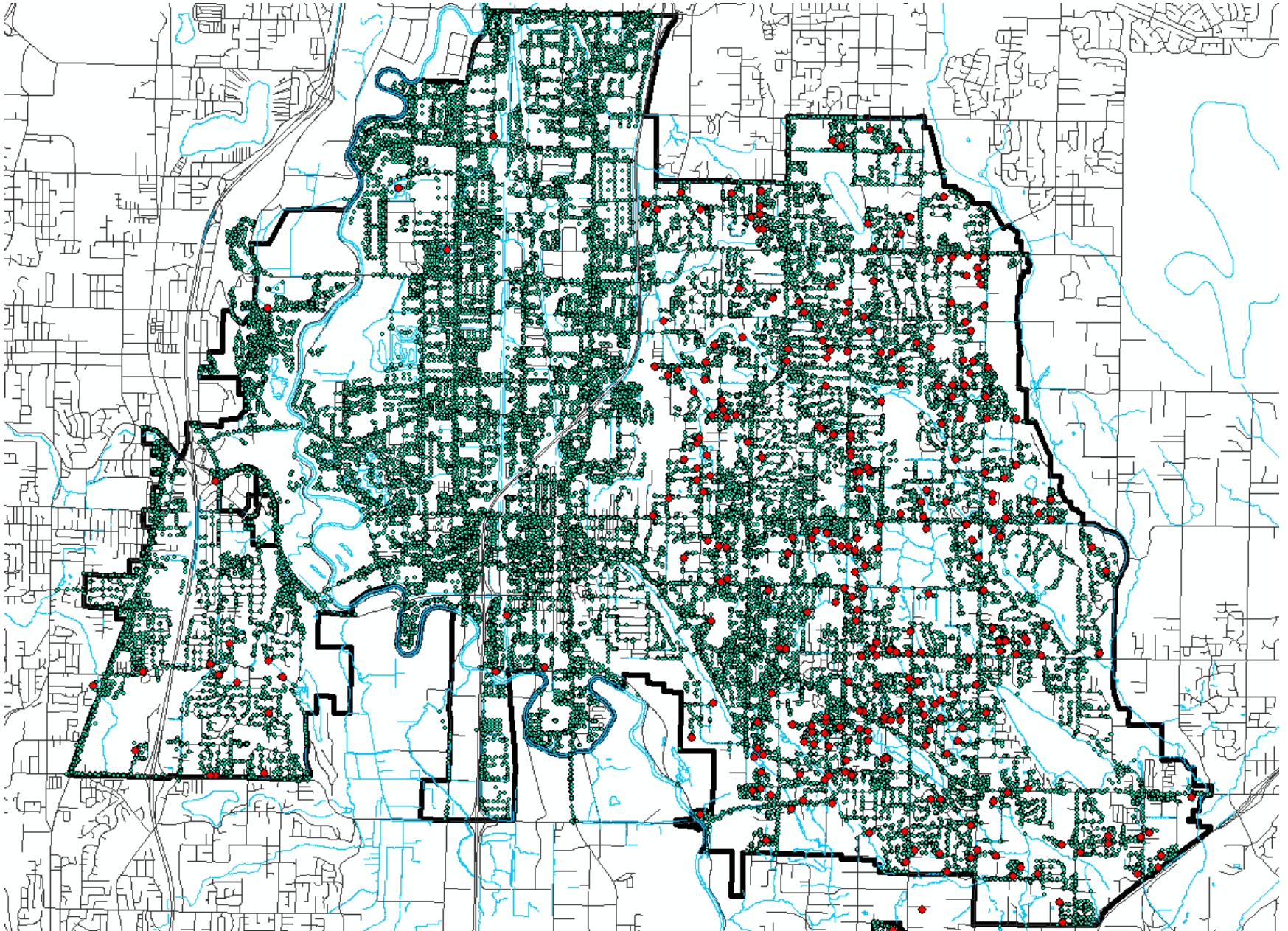


A Lot Going On...

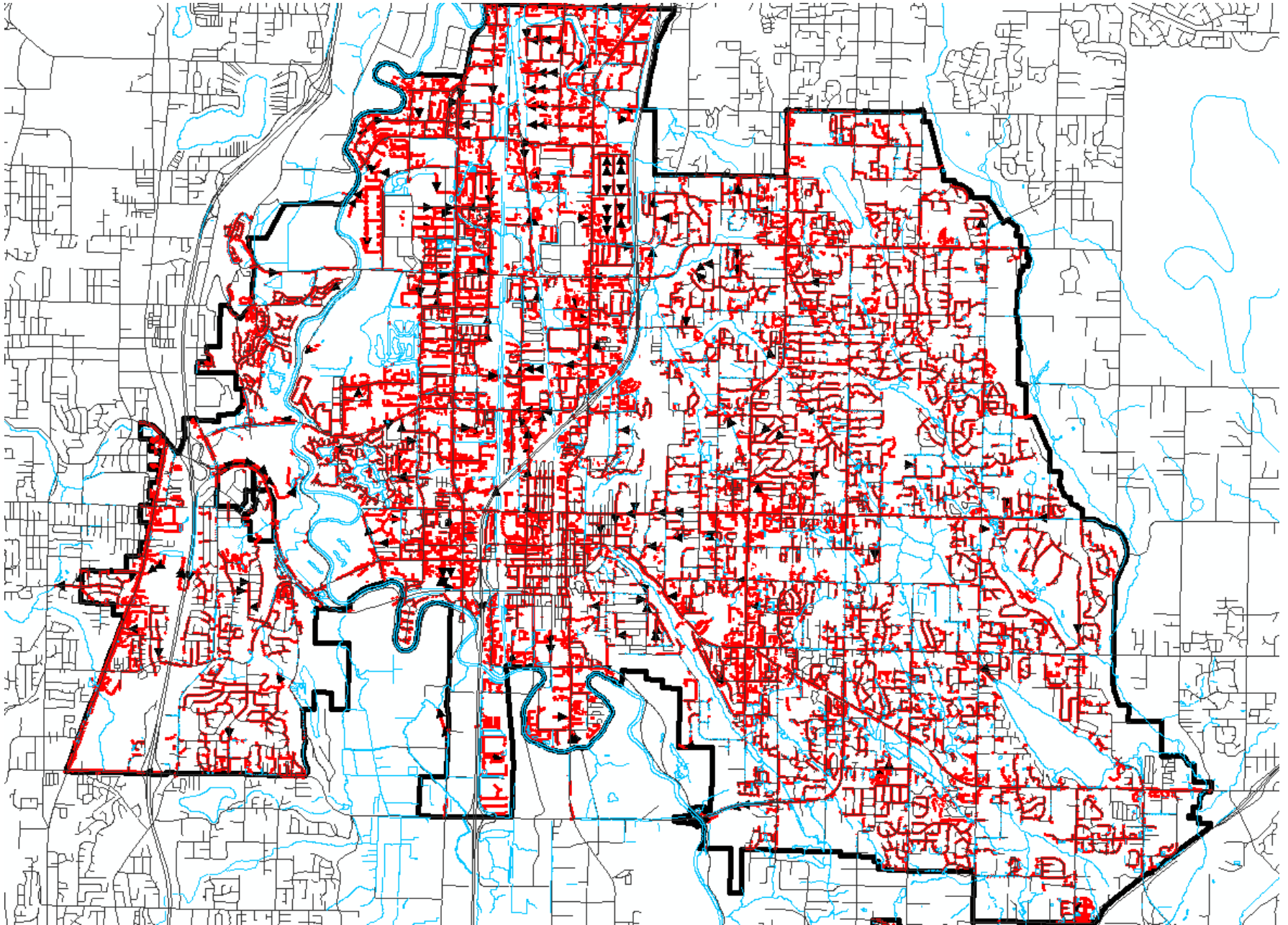
- **Education and Outreach**
- **Public Involvement**
- Documentation and Reporting
- Staff Training
- Business Inspection Program
- Regional Stormwater Monitoring
- Green-Duwamish PLA
- Soos Cr TMDL
- 'All hands on deck'



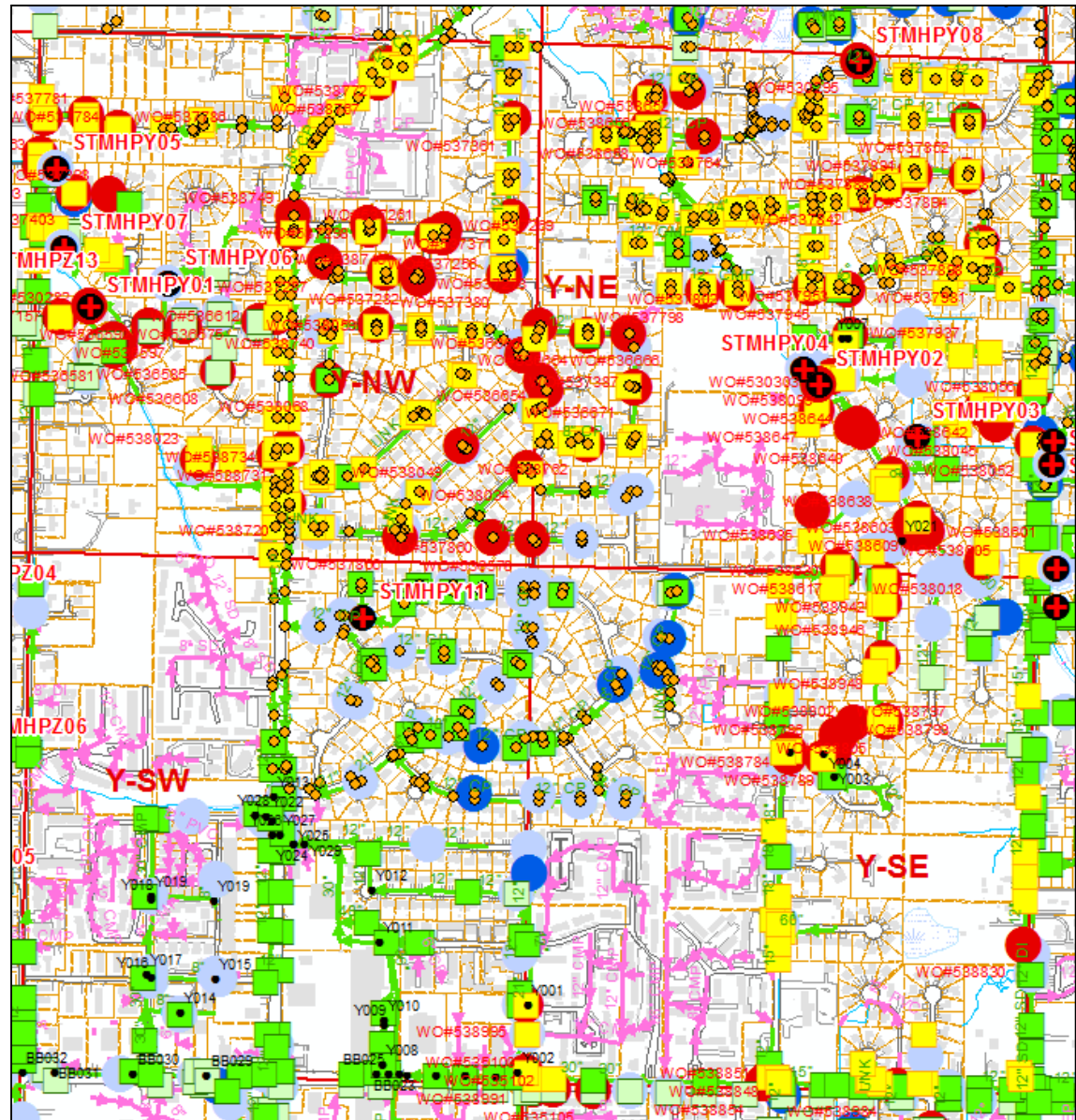
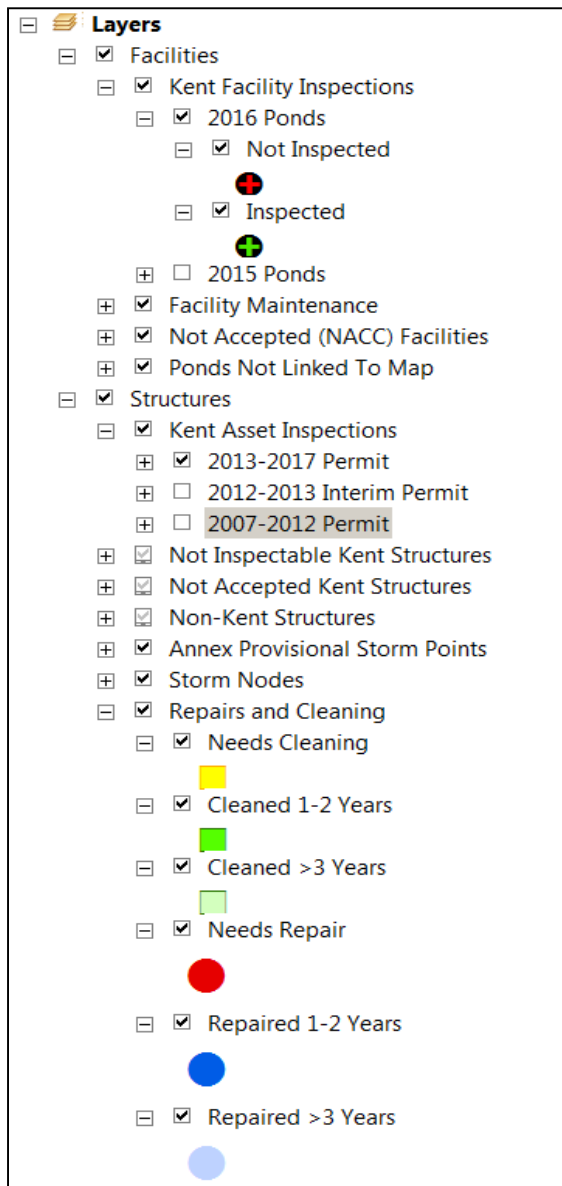
Operations and Maintenance



Operations and Maintenance



Operations and Maintenance



Operations and Maintenance



Operations and Maintenance



Operations and Maintenance



Operations and Maintenance



Operations and Maintenance



Spill and Illicit Discharge Response



Spill and Illicit Discharge Response



Spill and Illicit Discharge Response



Spill and Illicit Discharge Response



Spill and Illicit Discharge Response



Spill and Illicit Discharge Response



Spill and Illicit Discharge Response



Development and Construction

City of Kent

Surface Water Design Manual
January 2017



Development and Construction



Development and Construction



Development and Construction



The Importance of SW Education



